

Figure 1: Population Trends by Jurisdiction (1900-2001)

Year	Castle Rock	Kalama	Kelso	Longview	Woodland	Unincorp. Cowlitz	Cowlitz County	State of Washington
Population:								
1900	750	554	694			5,879	7,877	518,103
1910	998	816	2,039		384	8,324	12,561	1,141,990
1920	829	1,228	2,228		521	6,985	11,791	1,356,621
1930	1,239	940	6,260	10,652	1,094	11,721	31,906	1,563,396
1940	1,182	1,028	6,749	12,385	980	17,831	40,155	1,736,191
1950	1,255	1,121	7,345	20,339	1,292	22,013	53,365	2,378,963
1960	1,424	1,088	8,379	23,349	1,336	22,225	57,801	2,853,214
1970	1,647	1,106	10,296	28,373	1,622	25,572	68,616	3,413,244
1980	2,162	1,216	11,129	31,052	2,341	31,733	79,633	4,130,163
1990	2,067	1,210	11,767	31,499	2,500	33,170	82,119	4,866,663
2000	2,130	1,783	11,895	34,660	3,780	38,792	92,948	5,894,121
2001	2,125	1,840	11,860	35,100	3,875	39,195	93,900	5,974,900
Annual Growth:								
1900-1910	25	26	135			245	468	62,389
1910-1920	-17	41	19		14	134	-77	21,463
1920-1930	41	-29	403		57	474	2,012	20,678
1930-1940	-6	9	49	173		611	825	17,280
1940-1950	7	9	60	795	31	418	1,321	64,277
1950-1960	17	-5	103	301	4	21	444	47,425
1960-1970	22	2	192	502	29	335	1,082	56,003
1970-1980	52		83	268	72	616	1,102	71,692
1980-1990	-10		64	45	16	144	249	73,650
1990-2000	6	57	13	316	128	562	1,083	102,746
2000-2001	-5	57	-35	440	95	403	952	80,779
Average Annual Growth Rate:								
1900-1910	2.9%	3.9%	11.4%			3.5%	4.8%	8.2%
1910-1920	-1.8%	4.2%	0.9%		3.1%	-1.7%	-0.6%	1.7%
1920-1930	4.1%	-2.6%	10.9%		7.7%	5.3%	10.5%	1.4%
1930-1940	-0.5%	0.9%	0.8%	1.5%	-1.1%	4.3%	2.3%	1.1%
1940-1950	0.6%	0.9%	0.8%	5.1%	2.8%	2.1%	2.9%	3.2%
1950-1960	1.3%	-0.3%	1.3%	1.4%	0.3%	0.1%	0.8%	1.8%
1960-1970	1.5%	0.2%	2.1%	2.0%	2.0%	1.4%	1.7%	1.8%
1970-1980	2.8%	1.0%	0.8%	0.9%	3.7%	2.2%	1.5%	1.9%
1980-1990	-0.4%	-0.0%	0.6%	0.1%	0.7%	0.4%	0.3%	1.7%
1990-2000	0.3%	4.0%	0.1%	1.0%	4.2%	1.6%	1.2%	1.9%
2000-2001	-0.2%	3.2%	-0.3%	1.3%	2.5%	1.0%	1.0%	1.4%

Source: Cowlitz-Wahkiakum Council of Governments, Washington State Office of Financial Management, and U.S. Census Bureau.

Figure 2: Castle Rock Housing Trends by Type (1970-2000)

Year	SF	MF	Other	Total
# of Units:				
1970	505	98	24	627
1980	657	173	34	864
1990	599	177	66	842
2000	591	198	96	885
% Distribution:				
1970	80.5%	15.6%	3.8%	100.0%
1980	76.0%	20.0%	3.9%	100.0%
1990	71.1%	21.0%	7.8%	100.0%
2000	66.8%	22.4%	10.8%	100.0%

Source: Cowlitz-Wahkiakum Council of Governments and Washington State Office of Financial Management.

Figure 3: Average Household Size by Jurisdiction (1970-2000)

Year	Castle Rock	Kalama	Kelso	Longview	Woodland	Cowlitz County	State of Washington	United States
1970	2.80	3.11	2.80	2.95	2.89	3.07	3.08	3.14
1980	2.65	2.64	2.52	2.49	2.63	2.67	2.61	2.75
1990	2.61	2.54	2.49	2.40	2.59	2.56	2.53	2.63
2000	2.53	2.44	2.52	2.40	2.67	2.55	2.53	2.59

Source: Cowlitz-Wahkiakum Council of Governments and U.S. Census Bureau.

Figure 4: Castle Rock Family Households (1980-2000)

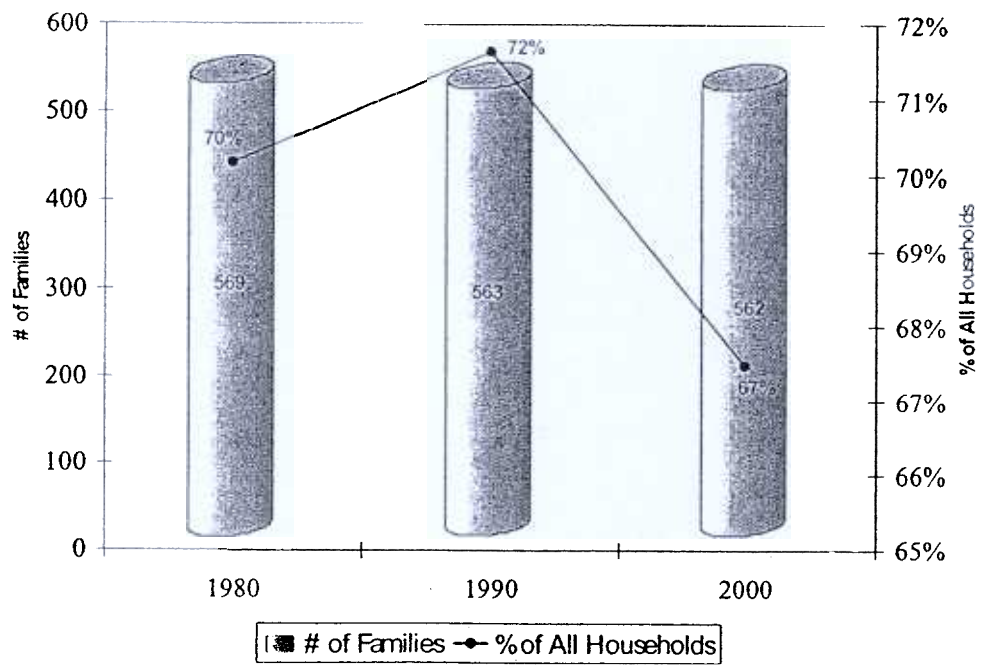
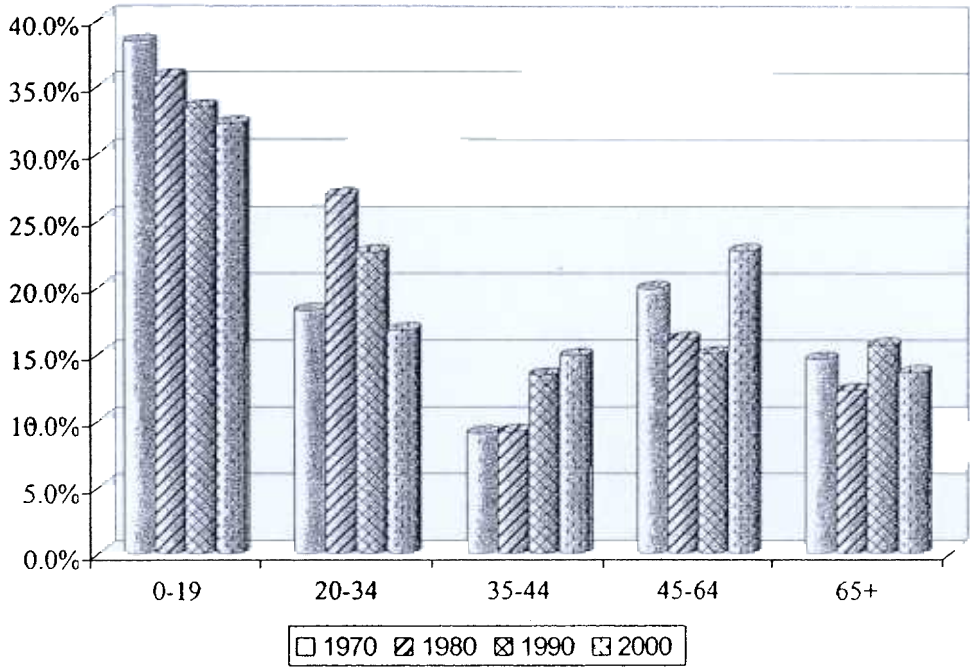
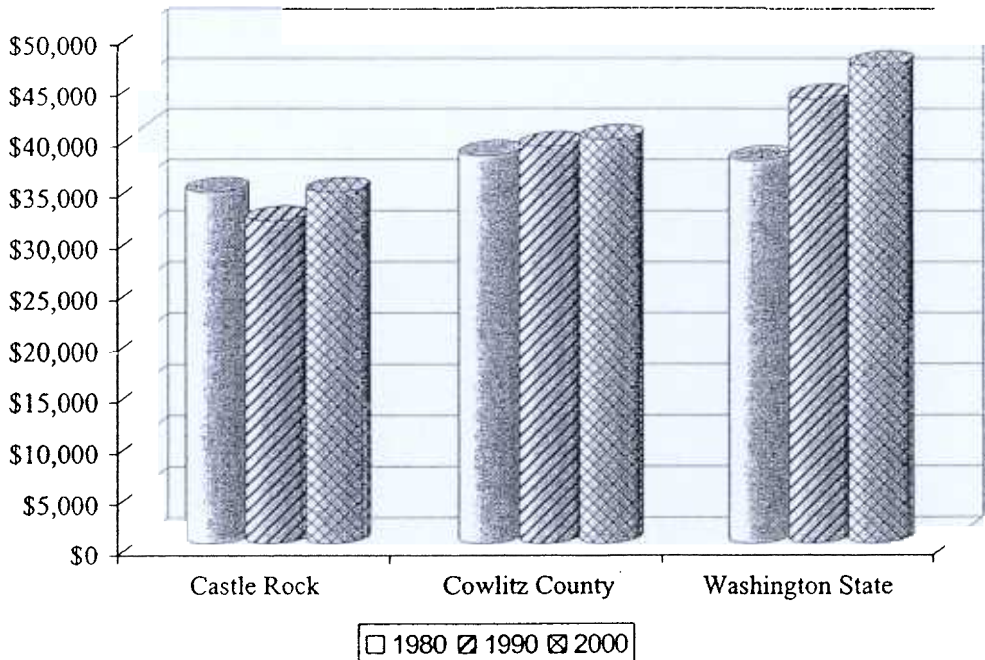


Figure 5: Age Distribution of Castle Rock Residents (1970-2000)



Source: Cowlitz-Wahkiakum Council of Governments and U.S. Census.

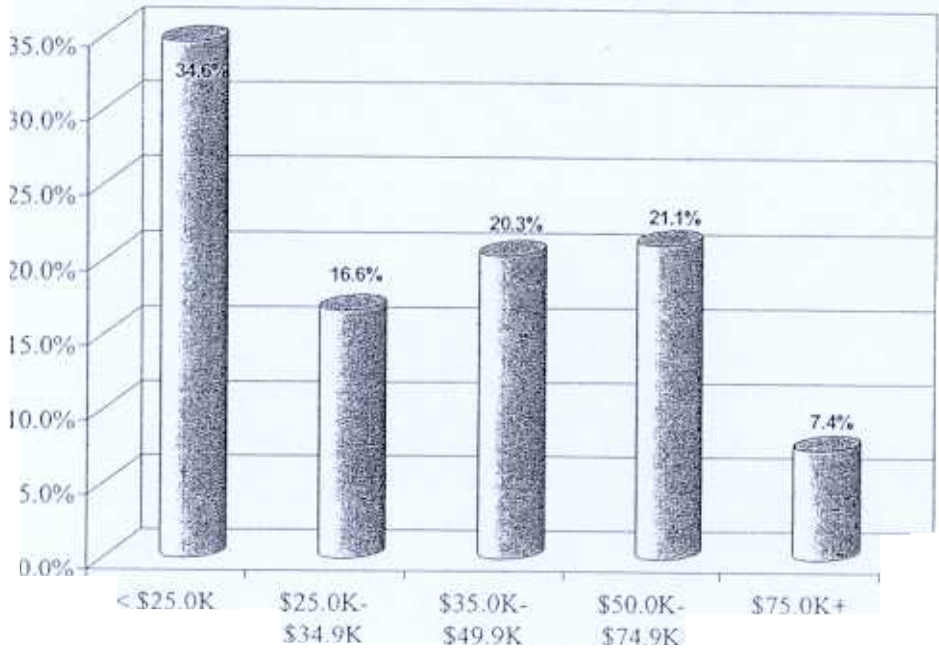
Figure 6: Median Income Growth (1980-2000)



Note: Incomes have been adjusted into year 2000 dollars.

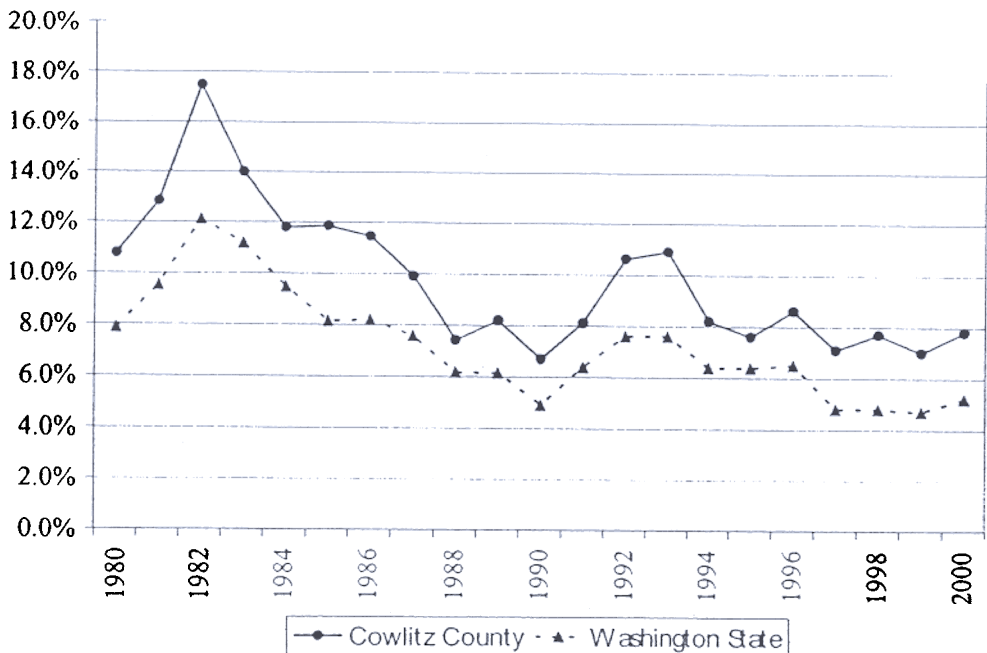
Source: U.S. Census and CACI.

Figure 7: Income Distribution of Castle Rock Households (2000)



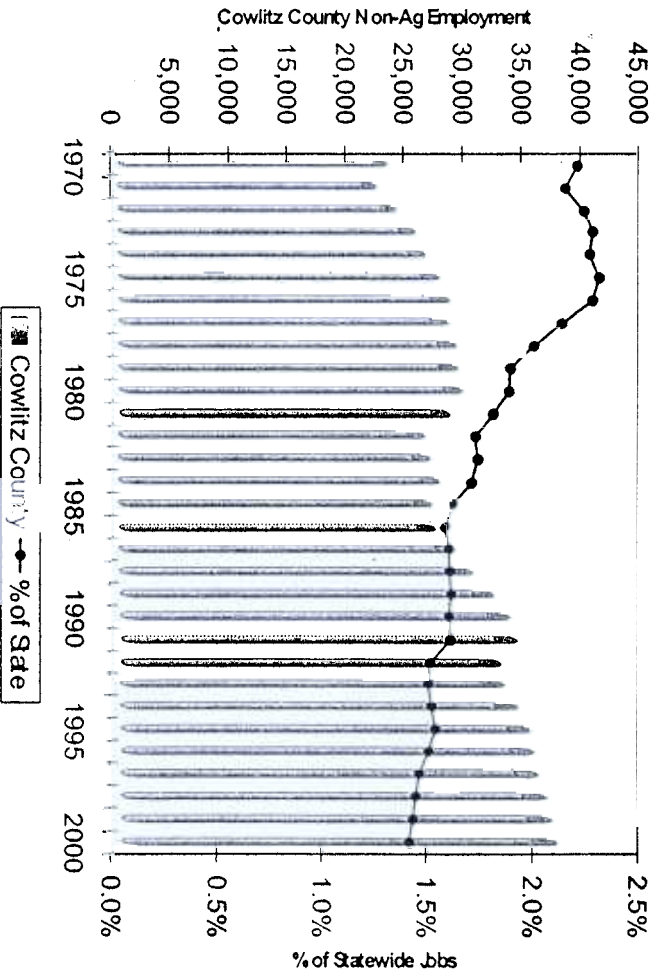
Source: CACI

Figure 8: Unemployment Rates 1980-2000



Source: Washington State Employment Security.

Figure 9: Cowlitz County Employment Trends (1970-2000)



Source: Washington State Employment Security.

Figure 10: Castle Rock Employment Trends (1995-1999)

Sector	1999 Annual Averages			Change 1995-1999		
	# of Firms	Avg. Emp.	Avg. Wage	# of Firms	Avg. Emp.	Avg. Wage
Agriculture	13	37	\$13,200	-3	-44	-\$6,600
Construction	36	118	\$22,100	14	6	-\$700
Manufacturing	30	194	\$29,200	3	-64	\$4,200
TCU	16	39	\$25,600	4	17	-\$800
Wholesale Trade	7	29	\$45,000	-1	5	\$4,900
Retail Trade	32	323	\$11,200	-1	47	-\$600
FIRE	5	11	\$14,300	2	2	-\$6,200
Services	80	149	\$9,300	36	-48	-\$4,100
Total	219	900	\$18,000	54	-79	-\$600

Note: Wages have been adjusted for inflation. TCU denotes transportation, communication, and utilities. FIRE stands for finance, insurance, and real estate.

Source: Washington State Employment Security.